



Frankfort—Elberta Area Chamber of Commerce

P.O. Box 566, 517 Main Street, Frankfort, Michigan 49635
231-352-7251 www.frankfort-elberta.com fcfc@frankfort-elberta.com

Volume 4, Issue 6

June 2009

Board of Directors

President

James Martin

Vice President & Secretary

Steve Christian

Treasurer

Karen Dennis

LuAnn Elwell

Larry Hale

Dennis Haugen

Roger Johnson

Mike Jones

Linda Manville

Jared MacDonald

Robert McNabb

Bob McNeal

Damon Tondou

Executive Director

Joanne Bartley

Staff

Kim Micham

Donna Phillips

John Patterson



President's Letter

Welcome to the official start of summer. It appears most businesses had a good Memorial Day Weekend; at least the weather cooperated. The office is back up to full speed with many calls and folks stopping in for information.

A couple of notes: The community maps have been delivered. We ordered 15,000 of these popular items. Please contact the Chamber for your supply of the maps. Also, please be sure to drop off any brochures for your business so we can provide the most current information on your business to the public.

Sincerely,

Jim Martin, President

Frankfort-Elberta Area Chamber of Commerce

Profile of the Month

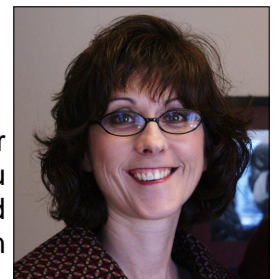
Plumstead, P.C.

"We make the accounting and tax side of your business understandable at affordable prices allowing you to focus on running your business," says Amy Plumstead CPA. Forming Plumstead P.C. in 2004, she opened an office within the City of Frankfort in November 2008.

Plumstead P.C. focuses on tax return preparation, business consulting, financial statement preparation, QuickBooks training, consulting and setup, and payroll tax processing. "Our clients appreciate the high quality services they receive from our firm and our competitive pricing structure. They feel empowered when they leave our office with that "I can do this" feeling," says Amy.

As a young woman, Amy received an industrial engineering degree from GMI Engineering & Management Institute (Kettering University) and began her career as a process engineer at General Motors. Always drawn to the number side of business, she continued her education at the University of Michigan in accounting and business. In 1992, Amy changed her career path and became a certified public accountant at Coopers & Lybrand LLP working in both the audit and tax areas. In 1997, Amy and her husband, Doug, moved with their three children to Frankfort.

Heavily involved in the Frankfort community, Amy is serving on the Frankfort Rotary Club Board of Directors, Odyssey of the Mind coach, Township Representative for Benzie Shores District Library, Director and Fundraising Coordinator for Frankfort-Elberta Youth (continued on page 3)



Frankfort—Elberta Area Chamber of Commerce

Community Map

New Community Maps are now available for distribution! If you would like to display them in your place of business, please contact the Chamber.

Parade Applications

If you would like to participate in the July 4th parade, you can stop by the office and fill out the application. The form is also available on our website: <http://www.frankfort-elberta.com/calendar.html>, go to "July 4th".

2009 Arts and Crafts Fairs

Now is your chance to advertise in the Frankfort—Elberta Area Chamber of Commerce 2009 Arts & Crafts Fair programs. The handouts are made available to each of the shoppers and participants of the fairs.



We believe this will provide a unique and beneficial opportunity to promote your business to a wide market. Depending on the show, 500 to 2,500 programs will be distributed.

Each individual program ad will cost \$50. Purchase four advertisements and receive one free (total cost \$150). Purchase three and receive a \$25 discount (total cost \$125).

Fair program schedule:

- June 20th—Frankfort Craft Fair
- July 18th—Elberta Art & Crafts Fair
- August 14-15—Frankfort Art Fair
- November 28—Holly Berry

Please submit your camera-ready advertisement to the Frankfort—Elberta Area Chamber of Commerce prior to June 5th.

Written and developed by:



info@thecreativecounsel.com
www.thecreativecounsel.com

Printed by:



515 Main Street
Downtown Frankfort
231-352-4440

Welcome our Newest Members

Charming Spacious Apartment with a Harbor View

Robert & Barbara Fought
230 Forest Avenue, Frankfort
231-352-9905
bfought@charter.net
Accommodation—Rental

Harborview Condo—Unit A

Adolf M. Preuss
1740 Scenic Highway, Frankfort
231-352-4852
adolpreuss@yahoo.com
Accommodation—Rental

Business After Hours

The Frankfort—Elberta Area Chamber of Commerce Business After Hours was well attended by Chamber Members. Executive Chef Derrick Gage and the staff at Tali Bistro hosted the monthly event.

The Chamber would like to thank the businesses for donating prizes that were given away in the business card drawing: Cool Spot, Crystal Lake Adventure Sports, Dinghy's Restaurant & Bar, and Olsen Sayles.

The June Business After Hours will be hosted by Grand Traverse Regional Land Conservancy at their 58-acre property in Elberta on Tuesday, June 23th from 5 to 7pm. The entrance is across from First Street and Bay Valley Inn. Attendees will take a short hike up a gradual incline to an outlook area where the event will take place. There is some parking at the entrance, Community Center or the ball field. If it is raining, the Business After Hours will be held at the Frankfort-Elberta Area Chamber of Commerce office. Wear appropriate footwear.

Reserve a date to host a Business After Hours. It's a great way to bring Chamber Members to your place of business in a casual setting and offers a unique opportunity to promote your products and services.

Frankfort—Elberta Area Chamber of Commerce

(continued from cover page—Profile) Sports Boosters, as well as the treasurer of Trinity Lutheran Church and supporter of many other local organizations.

Plumstead P.C. is located at 228 Seventh Street (corner of Leelanau Avenue and M-22) in Frankfort. Amy can be reached at 231-352-7155 or plumsteadpc@gmail.com.

June 2009 Calendar of Events

- 1-5 Crystal Lake Art Center—New Dimensions in Watercolor 9am—4pm
- 4 Stefanie Vallee, motivational speaker, whitewater kayak champion and artist at Mills Community House 7pm
- 8 Benzie Shores District Library Book Share Group 9am
- 11 Frankfort-Elberta Area Chamber of Commerce Board Meeting 7:30am
- 11 Benzonia Academy Lecture Series at the Mills Community House, Michigan, Ohio & the Toledo War by Prof. Mike Nagle 7pm
- 12 Benzie Shores District Library First day of Summer Reading Program sign-up
- 14 St. Andrews Presbyterian Church presents Concert On the Hill 1:30pm
- 16 Benzie Shores District Library Reflections by the Bay: Hiking and Biking Trails in Benzie County 7pm
- 18 Benzie Shores District Library Friends of the Library annual meeting 9:30am
- 19 Spring into Summer Sale
- 19 Benzie Shores District Library Gordon the Magician, summer reading program, kick-off event. Mills Community House, sponsored by all libraries 11am
- 20 Frankfort Craft Fair - Market Square Park 10am—4pm
- 20 Antique Vehicle and Muscle Car Show - sponsored and run by the Crystal Lodge Masons - Mineral Springs Park 8am
- 20 Solstice Festival - Elberta
- 23 Business After Hours at Elberta Dunes Property. Sponsored by Grand Traverse Regional Land Conservancy 5—7pm
- 24 Benzie Shores District Library Story Hour "Be Creative @ Your Library" 10:30am
- 26 Nitecrawler Hunt 10pm
- 27 Take A Kid Fishing - Mineral Springs Park 8am
- 27 Strawberry Social—Benzie County Road Commission 1—3pm
- 27 Celebration of Life Motorcycle Ride

On Going Events

Thursday Elberta Farmer's Market—Elberta Pavilion Park 7:30 am

Saturday Frankfort Farmer's Market—Frankfort Boat Launch Sidewalk, 8 am—1pm

Events sponsored by the Frankfort-Elberta Area Chamber of Commerce are listed in black

For the most up-to-date Calendar of Events, please go to www.frankfort-elberta.com

Frankfort—Elberta Area Chamber of Commerce

Monthly Membership Meetings

Members of the Chamber are encouraged to attend the Monthly Membership Meetings. It is held on the second Thursday of each month at 7:30 a.m. in the Chamber office.

Let Summer Begin!

June 19 - Spring into Summer Sale - If you are planning to participate in this activity and stay open from 6-8 pm, please let our office know, so when people ask, we have a list of stores participating!

June 20 - Frankfort Craft Fair - Market Square Park - 10 am - 5 pm.

June 20 - Antique & Vehicle Muscle Car Show - Mineral Springs Park - Registration begins at 8 am.

June 20 - Elberta Solstice Festival - Elberta Waterfront Park - Music, Food, Fun - 2 pm to midnight. If you are interested in sponsoring or volunteering, contact Josh Stoltz 640-0200.

June 27—Take Your Kid Fishing - Mineral Springs Park 8am

June Office Hours

Monday—Friday 9—5

Saturday 11—3



The Schmidt Amusements Carnival will be at the Frankfort High School from July 2nd to the 5th.

Open:

July 2nd—5 p.m.

July 3rd—12 p.m.

July 4th—10 a.m.

July 5th—12 p.m. to 6 p.m.

A portion of the ticket sales will benefit the Frankfort—Elberta Area Chamber of Commerce and future events.

Frankfort—Elberta Area
Chamber of Commerce

PO Box 566

517 Main Street

Frankfort, Michigan 49635

www.frankfort-elberta.com